

ARROW CVC SETS

for ultrasound guided and ECG controlled placement

AT A GLANCE

- locate veins that are not visible or palpable
- decrease needle penetrations and related risks
- decrease placement failures
- reduce rates of complications during cannulation
- enhanced patient safety
- reduce patient waiting time
- economical
- latex-free
- PVC-free
- DEHP-free

ADDED ACCURACY, EFFICIENCY AND SAFETY

Accurate, safe and efficient positioning of a CVC catheter is the critical part during every insertion procedure and crucial for its successful performance. Ultrasound guidance helps to prevent erroneous placements in a very efficient manner, as the tip of the needle and the catheter can precisely and reliably be visualised while advancing and reaching the intended position.

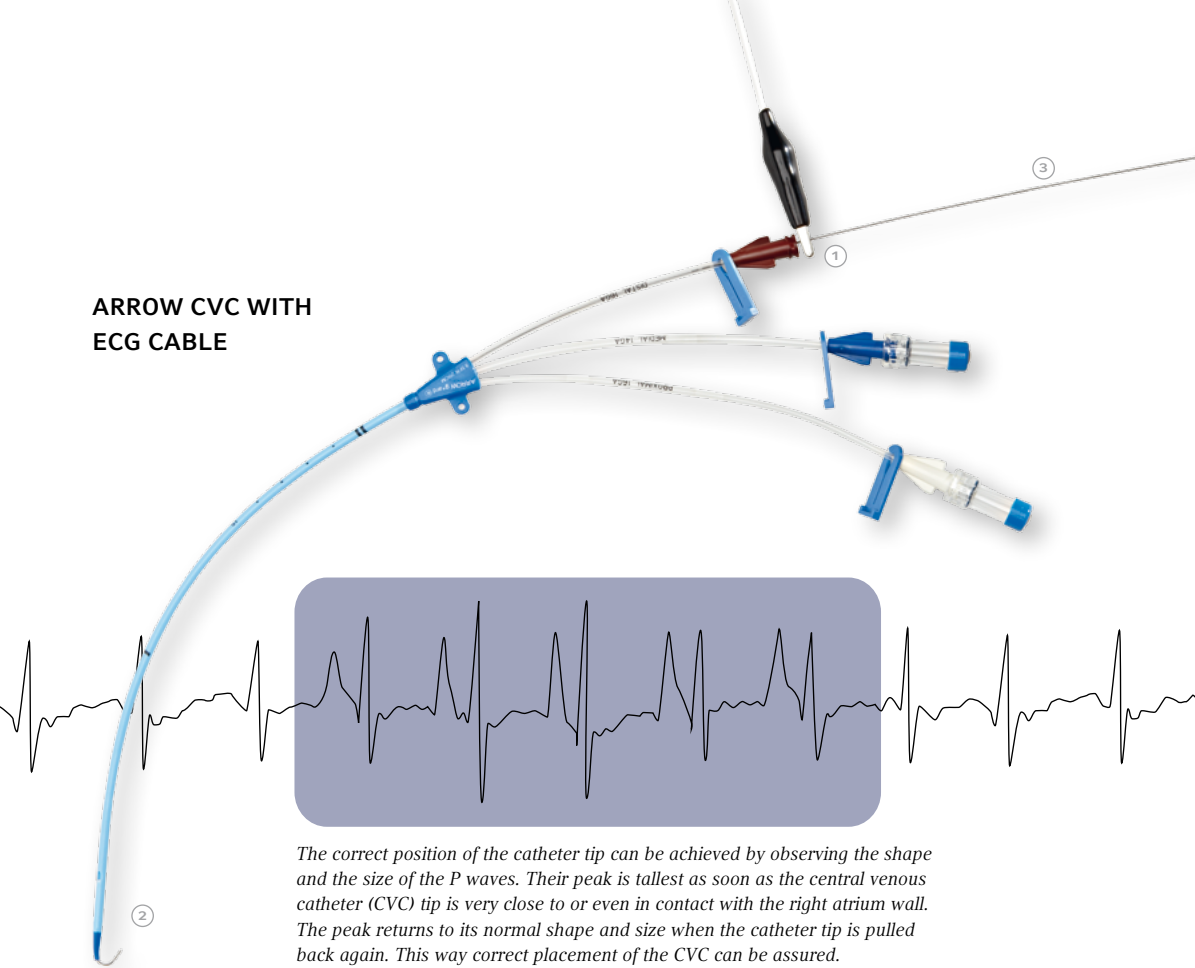
By using the echogenic needle, taking advantage of this technique, complications, such as placement failures, several insertion attempts or needle penetrations can now be reduced significantly. Moreover, its easy application not only leads to shorter patient waiting times but also helps to save costs.

SET COMPONENTS

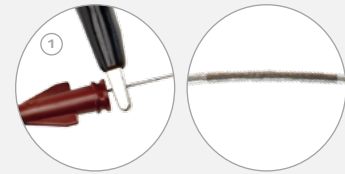
- introducer needle: echogenic 18 Ga. x 2½" (6,35 cm) XTW
- indwelling-catheter, radiopaque polyurethane with Blue FlexTip® and ARROWg+ard antimicrobial surface treatment
- extension line clamps
- catheter fixation clamp
- Luer-Slip Syringe
- spring-wire guide with cm-markings and additional ECG marking and Arrow advancer
- ECG (Electrocardiogram) extension cable
- scalpel #11, short handle
- tissue dilator



ARROW CVC WITH ECG CABLE



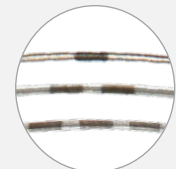
The correct position of the catheter tip can be achieved by observing the shape and the size of the P waves. Their peak is tallest as soon as the central venous catheter (CVC) tip is very close to or even in contact with the right atrium wall. The peak returns to its normal shape and size when the catheter tip is pulled back again. This way correct placement of the CVC can be assured.



1 a clear marking indicates where the alligator clip has to be placed



2 J-Tip on distal side of spring-wire guide



3 spring-wire guide with cm markings at 10, 20 and 30 cm as positioning reference points for catheter tip placement

ORDERING INFORMATION

CVC SETS

ARROW

REF.	CATHETER					SPRING-WIRE GUIDE				QTY
	LUMEN	GA/FR.	LENGTH	MATERIAL	EXT. LINE	SIZE	LENGTH	TIP CONFIG.		
EU-04701-CVT	A	14 Ga	8" (20 cm)	PUR	X	.826mm (032")	60 cm	J/straight	10	
EU-04730-CVT	A	14 Ga	12" (30 cm)	PUR	X	.826mm (032")	68 cm	J/straight	10	
EU-04301-CVT	A	16 Ga	8" (20 cm)	PUR	X	.826mm (032")	60 cm	J/straight	10	
EU-17702-CVT	B	7 Fr.	8" (20cm)	PUR	-	.826mm (032")	60 cm	J/straight	10	
EU-27702-CVT	B	7 Fr.	8" (20 cm)	PUR A+g	-	.826mm (032")	60 cm	J/straight	10	
EU-16702-CVT	C	7 Fr.	8" (20 cm)	PUR	-	.826mm (032")	60 cm	J/straight	10	
EU-26702-CVT	C	7 Fr.	8" (20 cm)	PUR A+g	-	.826mm (032")	60 cm	J/straight	10	
EU-14702-CVT	C	7 Fr.	12" (30 cm)	PUR	-	.826mm (032")	68 cm	J/straight	10	
EU-15802-CVT	E	8 Fr.	8" (20 cm)	PUR	-	.826mm (032")	60 cm	J/straight	10	
EU-25802-CVT	E	8 Fr.	8" (20cm)	PUR A+g	-	.826mm (032")	60 cm	J/straight	10	
EU-15703-CVT	H	7 Fr.	8" (20 cm)	PUR	-	.826mm (032")	60 cm	J/straight	10	
EU-25703-CVT	H	7 Fr.	8" (20 cm)	PUR A+g	-	.826mm (032")	60 cm	J/straight	10	
EU-14703-CVT	H	7 Fr.	12" (30 cm)	PUR	-	.826mm (032")	68 cm	J/straight	10	
EU-24703-CVT	H	7 Fr.	12" (30 cm)	PUR A+g	-	.826mm (032")	68 cm	J/straight	10	
EU-25853-CVT	I	8,5 Fr.	8" (20 cm)	PUR A+g	-	.826mm (032")	60 cm	J/straight	10	
EU-15854-CVT	J	8,5 Fr.	8" (20 cm)	PUR	-	.826mm (032")	60 cm	J/straight	10	
EU-25854-CVT	J	8,5 Fr.	8" (20 cm)	PUR A+g	-	.826mm (032")	60 cm	J/straight	10	
EU-15855-CVT	K	8,5 Fr.	8" (20 cm)	PUR	-	.826mm (032")	60 cm	J/straight	10	

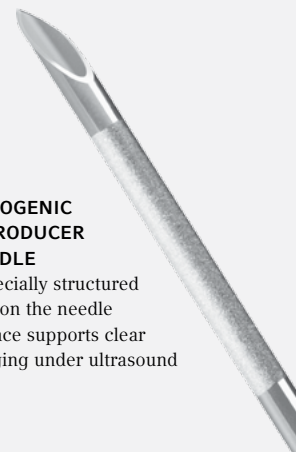
ARROWgard® Blue (A+g)

Polyurethan (PUR)



ECHOGENIC INTRODUCER NEEDLE

a specially structured part on the needle surface supports clear imaging under ultrasound



DISTRIBUTED BY:

TELEFLEX MEDICAL HEADQUARTER EMEA, IRELAND · IDA Business Park · Athlone · Co Westmeath

Tel. +353 (0)9 06 46 08 00 · Fax +353 (0)14 37 07 73 · orders.intl@teflexmedical.com

UNITED KINGDOM Tel. +44 (0)14 94 53 27 61 · info.uk@teflexmedical.com

WWW.TELEFLEXMEDICAL.COM

94 10 94 · 00 00 01 · REV A · 12 10 03 · All data current at time of printing. Subject to technical changes without further notice.

teflex